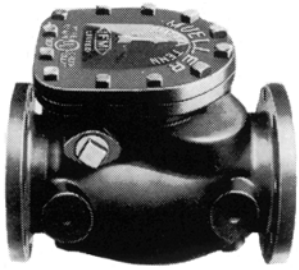


Rev. 11-03

Shaded area indicates change

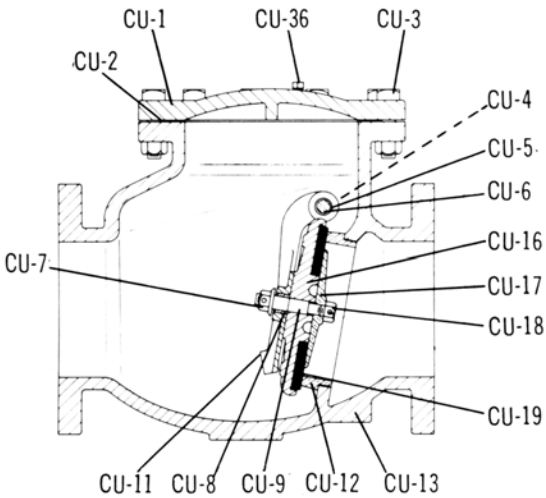
## FIRE PROTECTION PRODUCTS



**A-2120-6** Flange Ends - Bronze Disc Ring and Bronze Seat Ring  
**A-2122-6** Flange Ends - Rubber Disc Facing and Bronze Seat Ring  
 2-1/2" - 12" 175 psi Working Pressure - 350 psi Test Pressure  
 14" 150 psi Working Pressure - 300 psi Test Pressure  
 Listed by Underwriter Laboratories, Inc. and approved by Factory Mutual Research Corporation.

### PARTS LIST

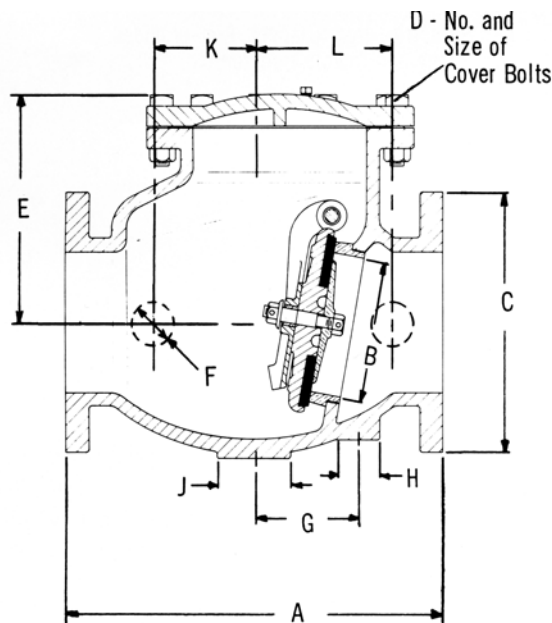
Catalog Parts Number	Description	Material	Material Standard
CU-1	Cover	Cast Iron	ASTM A126 Class B
CU-2	Cover Gasket	Rubber	ASTM D2000 AA705
CU-3	Cover Bolt & Nut	Steel	ASTM A307 Grade B
CU-4	Hinge Plug	Bronze	ASTM B62
CU-5	Hinge Bushing	Brass Tubing	ASTM B136
CU-6	Hinge Pin	Brass	ASTM B21 Alloy 464
CU-7	Stud Nut	Bronze	ASTM B62
CU-8	Stud Bushing	Brass Tubing	ASTM B136
CU-9	Disc Stud	Brass	ASTM B21 Alloy 464
CU-10	Disc - Metal Seat	Cast Iron*	ASTM A126 Class B
CU-11	Clapper Arm	Malleable Iron	ASTM A536 Grade 65-45-12
CU-12	Seat Ring	Bronze	ASTM B62
CU-13	Body - Flange Ends	Cast Iron	ASTM A126 Class B
CU-16	Disc - Rubber Seat	Cast Iron	ASTM A126 Class B
CU-17	Retaining Washer	Bronze	ASTM B62
CU-18	Retaining Nut	Brass	ASTM B21 Alloy 464
CU-19	Disc Facing	Rubber	ASTM D2000 2BG715
CU-36	Pipe Plug	Steel	None



\* Material - 62 for all 2-1/2" and 3" Check Valve and 4" A-2122-6 Check Valves

### DIMENSIONAL INFORMATION FOR FLANGE END CHECK VALVES

Size	A	B	C	D	E	F	G	H	J	K	L
2-1/2	10	2-1/2	7	6-1/2	5-3/4	2	2-1/4	1-5/8	2	3-1/8	2-3/4
3	11	3	7-1/2	7-1/2	6-1/4	2	2-1/2	1-5/8	2-3/8	3	3-1/4
4	12-7/8	4	9	12-1/2	7-1/4	2-11/16	3-1/4	2	2-11/16	3-3/8	3-5/8
6	16	6	11	12-5/8	9	3-1/4	4-1/4	2	3-1/4	4-9/16	4-13/16
8	19-1/2	8	13-1/2	14-5/8	10-1/2	3-1/4	5	2	3-1/4	5-5/8	5-7/8
10	22	10	16	14-3/4	12-3/4	3-1/4	5-5/8	2	3-14	6-7/8	6-7/8
12	24-1/8	12	19	18-3/4	14-3/4	3-1/4	6	2	3-1/4	7-5/8	7-7/8
14	29-1/2	14	21	20-3/4	16-1/2	4-5/8	6-1/2	2-11/16	4-5/8	9-1/16	9-1/16



### CHECK VALVE WEIGHTS

	2-1/2"	3"	4"	6"	8"	10"	12"	14"
A-2122-6	49	62	100	183	280	448	641	802
A-2120-6	49	62	101	186	279	471	643	789

### CHECK VALVE ORDERING INFORMATION

Specify: Quantity, Size, and Catalog Number

### CHECK VALVE PARTS ORDERING INFORMATION

Specify: Quantity, Catalog Number, Part Name, Size of Valve  
 Catalog Number of Valve, and Year Date of Valve